



PRODUCT LIFECYCLE SERVICES

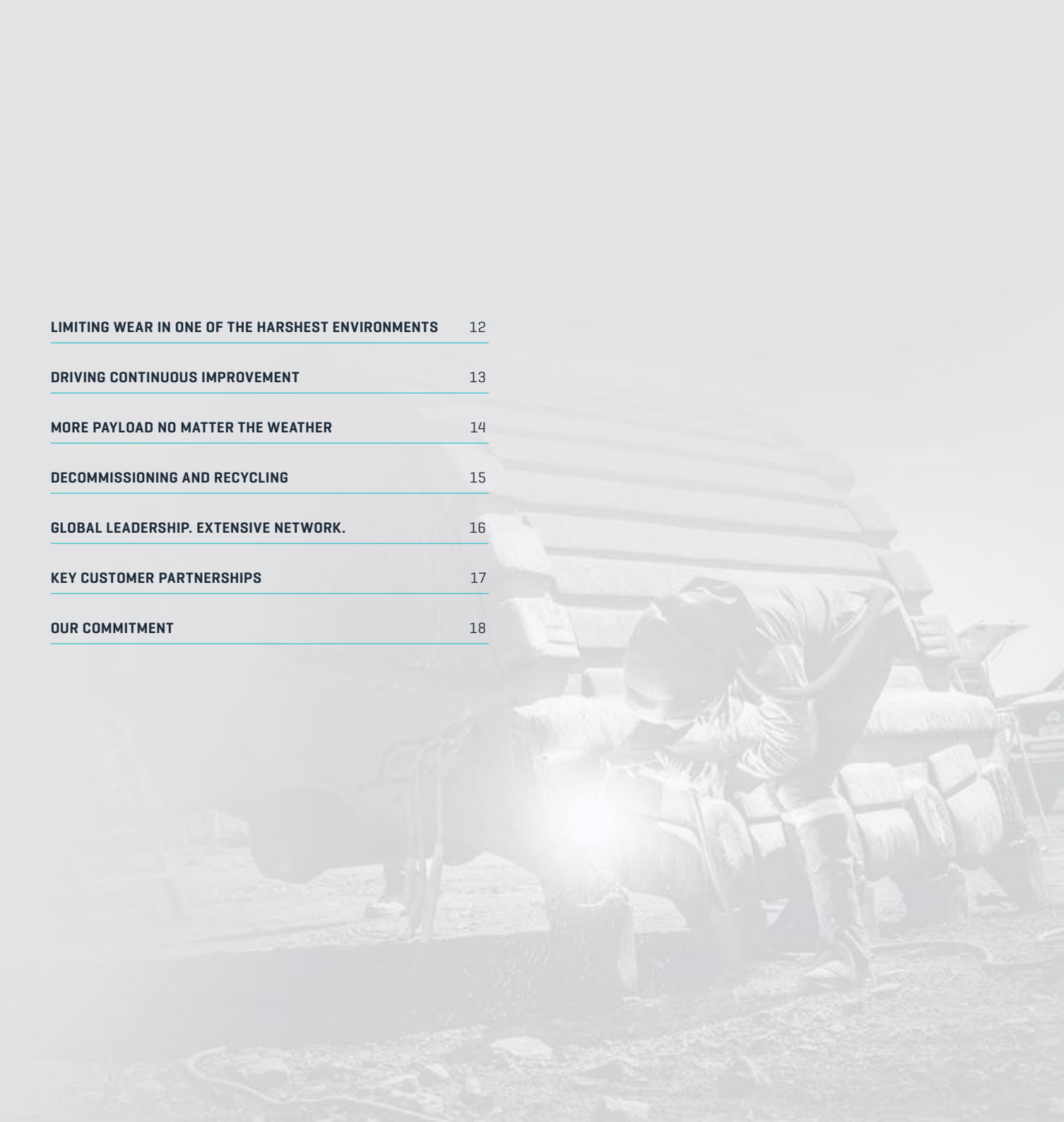
**UNMATCHED TAILORED SERVICES TO
OPTIMISE LOAD & HAUL ATTACHMENTS**



CONTENTS

INTRODUCTION	4
SERVICES FOCUSED ON RESULTS. BACKED BY INNOVATION.	5
COMPREHENSIVE SOLUTIONS. EXCEPTIONAL RESULTS.	6
TAILORED SERVICES	7
PREMIUM PARTS SUPPLY	8
ASSET REFURBISHMENT	9
ENHANCING SAFETY THROUGH COLLABORATION	10
SMARTER WEAR MANAGEMENT	11

LIMITING WEAR IN ONE OF THE HARSHTEST ENVIRONMENTS	12
DRIVING CONTINUOUS IMPROVEMENT	13
MORE PAYLOAD NO MATTER THE WEATHER	14
DECOMMISSIONING AND RECYCLING	15
GLOBAL LEADERSHIP. EXTENSIVE NETWORK.	16
KEY CUSTOMER PARTNERSHIPS	17
OUR COMMITMENT	18



WE'RE WITH YOU EVERY STEP OF THE WAY

TAILORED SUPPORT TO HELP MAXIMISE YOUR LOAD AND HAUL PERFORMANCE

Every tonne moved in mining should deliver maximum value. That's why the decisions made around load and haul assets matter so much. For Schlam, it's not just about equipment — it's about ensuring long-term performance, lowering lifecycle costs, and partnering with people who are committed to your success for the long haul.

At Schlam, we bring an engineering mindset to every challenge, designing load and haul products tailored to each customer's unique operation. Our support extends far beyond design through Schlam's Product Lifecycle Services, which ensure your assets are supported at every stage — from installation and commissioning through optimisation, maintenance, and final decommissioning.

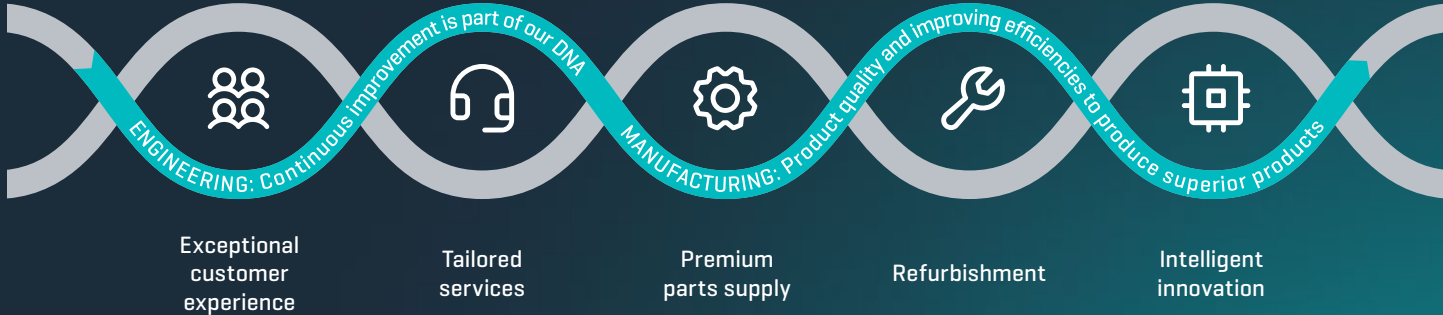
Aligned with your asset strategy — whether focused on replacement, maintenance, or a combination of both — Schlam's Product Lifecycle Services help reduce costs, extend asset life, and keep your load and haul assets performing at their peak, shift after shift.



SERVICES FOCUSED ON RESULTS. BACKED BY INNOVATION.

Exceptional customer experiences and intelligent innovation are at the core of our DNA.

Through our Product Lifecycle Services, we ensure your assets go further, perform better, and last longer—no matter where in the world you operate.



SUPPORTING EVERY PRODUCT.
EVERY CUSTOMER. EVERYWHERE.

COMPREHENSIVE SOLUTIONS. EXCEPTIONAL RESULTS.

> REDUCED TOTAL COST OF OWNERSHIP

Streamlined maintenance schedules and timely repairs to minimise asset costs

> MINIMISED DOWNTIME & IMPROVED PRODUCTIVITY

Proactive maintenance and wear management to extend service life.

> EXPERTISE ON CALL

Access to skilled technicians, wear specialist and engineers.

> TAILORED SERVICES

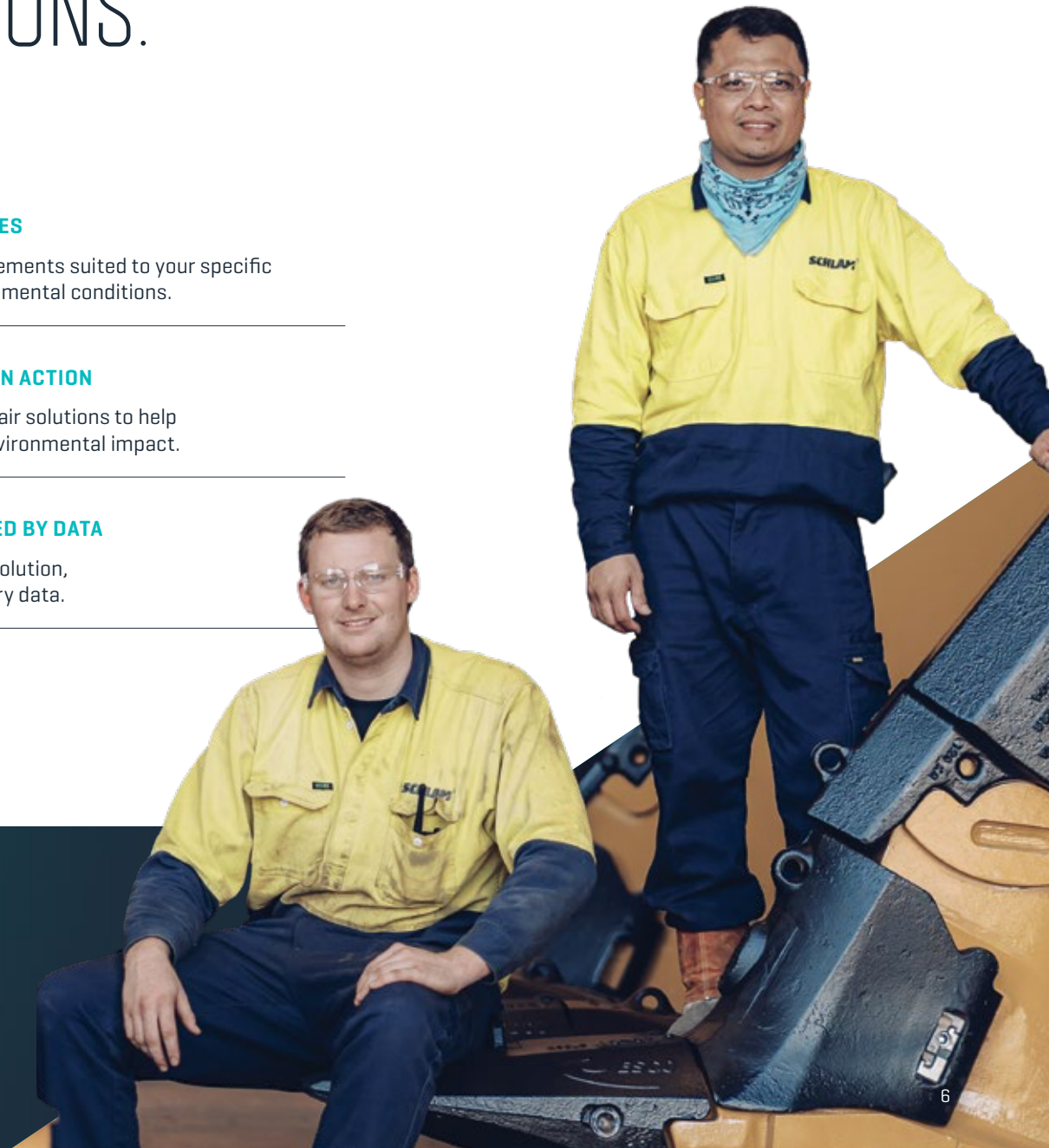
Custom service agreements suited to your specific workload and environmental conditions.

> SUSTAINABILITY IN ACTION

Maintenance and repair solutions to help reduce waste and environmental impact.

> DECISIONS BACKED BY DATA

Real-time product evolution, driven by asset history data.



TAILORED SERVICES

PRODUCT COMMISSIONING



Our team ensures every load and haul product is installed safely to meet your site's performance objectives while adhering to OEM standards. Our experienced team guarantees precise fitment, compliance, and optimal start-up to maximise efficiency from day one.

PERFORMANCE EXCELLENCE



Through scheduled inspections we monitor fatigue, wear rates, and asset condition to keep payload productivity at its peak. Using advanced in-field testing equipment, we provide detailed data and insights that you can access and review at any stage.

NON-CONFORMANCE MANAGEMENT



We take a systematic approach to identifying, addressing, and preventing deviations from standards and expectations. By catching issues early, implementing corrective actions, and learning from every instance, Schlam ensures our products and services meet the highest standards.

PRODUCT IMPROVEMENTS



We continuously enhance our products to meet your needs and exceed expectations. Through innovation, feedback, and careful analysis, we deliver solutions that are safer, more reliable, and higher performing — helping you achieve better results every day.

REFURBISHMENT



At Schlam, we transform older or worn equipment into high-performing, reliable assets. Through expert refurbishment and upgrades, we extend equipment life, enhance efficiency, and ensure your operations remain agile, responsive, and productive helping you get more from every asset.

DECOMMISSIONING AND RECYCLING



When your assets reach end of life, we can offer the safe decommissioning and recycling of truck beds and buckets — reducing risks and waste, cutting carbon, and supporting your sustainability goals.

PREMIUM PARTS SUPPLY

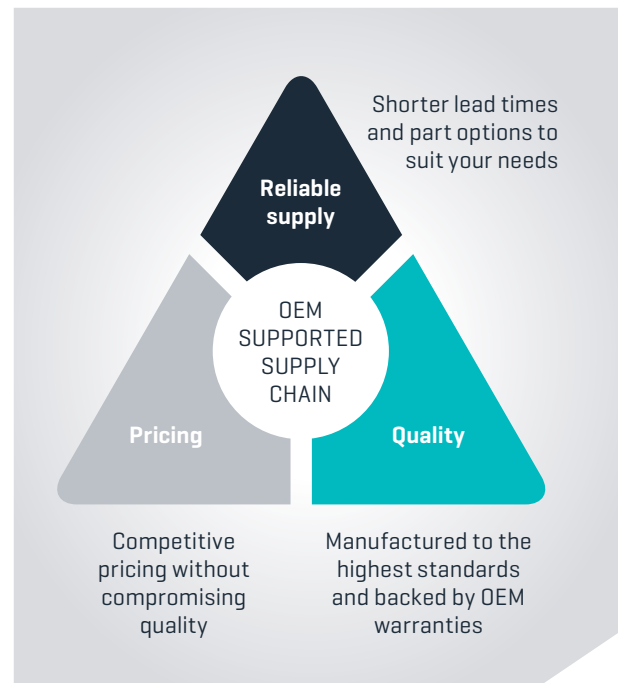
KEEPING YOUR LOAD AND HAUL EQUIPMENT PERFORMING SHIFT AFTER SHIFT

As a leading global manufacturer, we understand that timely access to spare parts is critical to avoiding costly downtime.

Through our global network, Schlam produces and delivers premium quality replacement parts for mining truck beds and buckets, ensuring your fleet performs exactly as it should.

Our range includes parts for:

- > Hercules mining truck beds
- > Barracuda mining buckets
- > Accessories
- > Mining parts
- > Installation kits



ASSET REFURBISHMENT

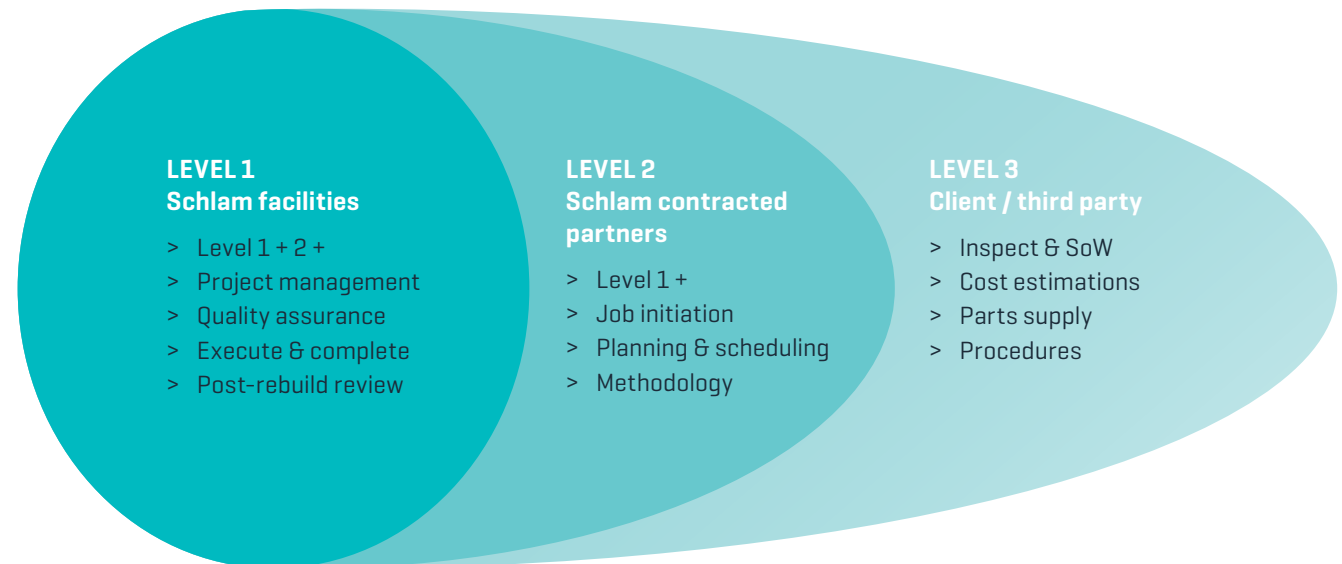
FROM AGING TO AGILE

Refurbishment with Schlam extends asset life while maximising the value of your investment.

By rebuilding and upgrading existing equipment, we reduce downtime, eliminate long replacement lead times, and return critical assets to service faster.

Each refurbishment is guided by insights from our field inspections, creating a continuous improvement cycle that lifts safety, reliability, and performance.

Work can be completed at Schlam facilities, onsite, or through trusted partners. While we specialise in Hercules truck bodies and Barracuda buckets, we also refurbish rope shovel buckets and other OEM or third-party equipment, delivering consistent performance across your fleet.



ENHANCING SAFETY THROUGH COLLABORATION

THE CHALLENGE

The installation, removal, and refurbishment of Hercules trays, Barracuda buckets, and other heavy equipment involve significant risks on site. These include:

- > Falls from heights
- > Crane and lifting hazards
- > Uncontrolled release of energy
- > Unexpected equipment movement
- > Exposure of personnel to unsafe zones
- > Complex coordination between multiple teams and contractors

OUR APPROACH

We work closely with our clients to review designs and methodologies, ensuring every step follows a hierarchy of controls. This approach:

- > Mitigates safety risks
- > Maintains operational efficiency
- > Reduces downtime
- > Ensures assets are handled, installed, and refurbished safely and reliably



SMARTER WEAR MANAGEMENT

INNOVATIVE PROTECTION FOR YOUR ASSETS



Our approach to wear management is proactive and drives continuous improvement in product design so your Schlam assets perform better and last longer.

WEAR MANAGEMENT ENGINEERED INTO OUR PRODUCTS

At Schlam, smart wear management for our truck beds and mining buckets is approached in three ways:

- > Learning your site-specific application
- > Selecting the right material grade
- > Increasing thickness in areas where it's needed most

ACTIVE MONITORING TO INCREASE FATIGUE LIFE

All Schlam attachments are fully supported by our Technical Support Representatives [TSR] around the world.

Our approach:

- > **Regular on-site equipment inspections** - TSRs attend site to perform thickness testing at regular intervals over the life of the asset.
- > **Data-driven predictive maintenance** - Using the data from the thickness tests, our TSR's build a wear profile to predict any maintenance required and suggest any works needed to ensure your asset continues to perform at its peak.
- > **Continuous improvements for your assets** - As the attachment gets closer to the end of its life, the wear profile data, previous maintenance and your site application information is used to continually improve the design extending the fatigue life and overall performance of your assets.



LIMITING WEAR IN ONE OF THE HARSHTEST ENVIRONMENTS

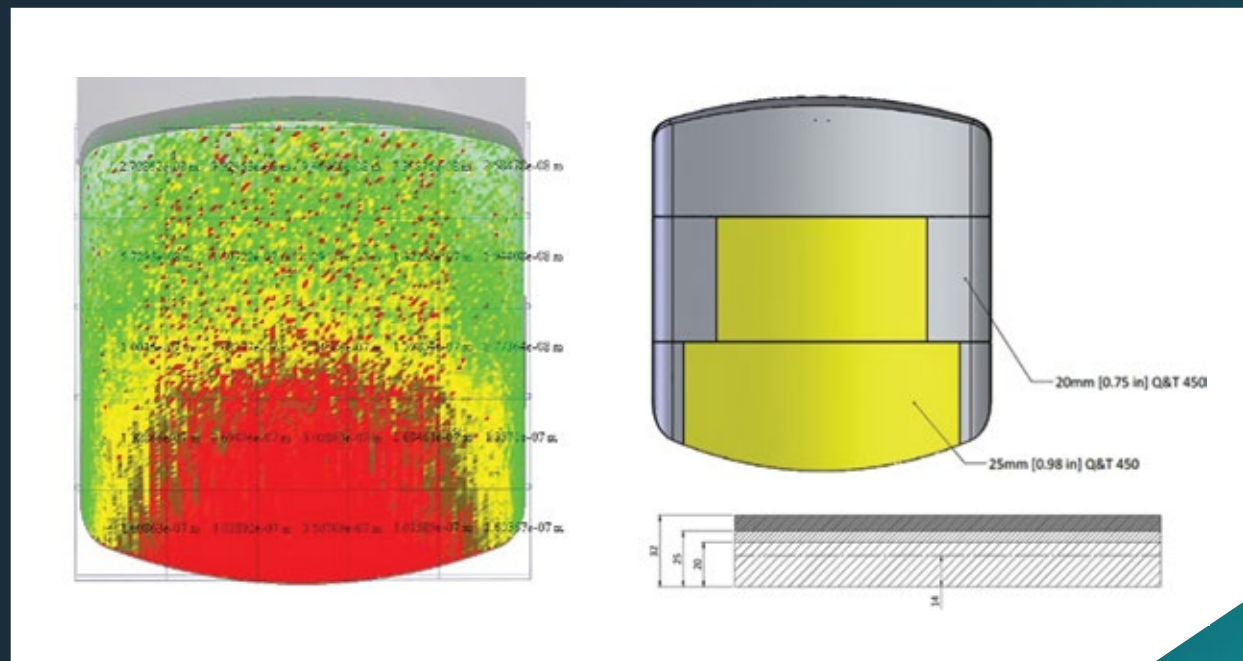
THE CHALLENGE

Gold mines have some of the most abrasive ore in the world. To reduce the operational and financial costs for a major tier one gold miner in Australia, we developed a wear profile for their 793 fleet.

Understanding the wear profile of the dump bed allows us to accurately model wear through the entire floor.

THE SOLUTION

- > Development of new floor profiles incorporating varying thicknesses
- > Variable thickness floors combined with wear packages to maximise the material thicknesses where they are needed, in the high impact and high wear zones [see image]
- > Body weight is reduced by approximately 3t compared to the current fleet.



DRIVING CONTINUOUS IMPROVEMENT

BOOST EFFICIENCY AND PRODUCTIVITY

Mining conditions are continuously evolving, and your assets need to keep up. We apply in-field learnings to our maintenance and engineering schedules to ensure objectives are achieved across both current and future attachments for your fleets.



SMART WEAR MONITORING

Wear senses fitted to your attachment for real-time tracking of wear and tear to help improve your asset life through preventive maintenance.

OPTIMISED PRODUCT DESIGN

We take in-field learnings and apply them to current and future designs for your site to improve payload efficiency, reduce fuel consumption and operating costs.

DATA-DRIVEN PERFORMANCE ANALYTICS

The data we collect provides actionable insights for optimising productivity and lowering total cost of ownership.



MORE PAYLOAD NO MATTER THE WEATHER

THE CHALLENGE

Mining is a global industry and places people and equipment in all environments, often in some of the most remote places where conditions push the limits.

The extreme cold presents unique risks to dump truck operators with ore prone to freezing. When the body is raised, a frozen load can cause the truck to tip and even roll over, potentially harming both the people and equipment.

While OEMs offer heated bodies to combat this problem, the trade-off is that the beds are excessively heavy, reducing payload and increasing operating costs.

THE SOLUTION

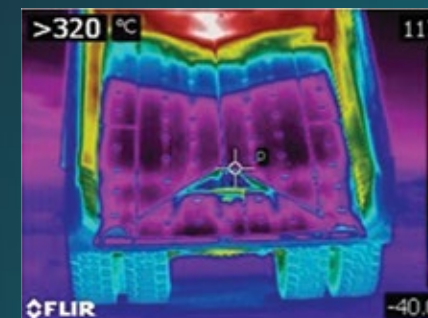
The Hercules heated body channels exhaust gases through the beds underside, specifically targeting areas prone to freezing in extreme conditions.

The design is based on rigorous flow modelling using Schlam's innovative computational fluid dynamics software combined with thousands of field-testing hours with a major tier one Copper miner in Kazakhstan.

The Schlam Hercules Heated Bed is proven to distribute heat more evenly than a comparable OEM design and carries 20 more tonnes due to its lightweight design.



Truck -
125 Hercules
Body



Truck -
123 Caterpillar
Dual Slope Body

DECOMMISSIONING & RECYCLING

CLOSING THE LOOP ON MINING ASSETS

As part of our Product Lifecycle Services offering, Schlamm supports customers through the end-of-life decommissioning and recycling of load and haul assets, helping mine operators manage non-core activities while meeting sustainability objectives.



Since 2023, Schlamm has recycled mining truck beds on behalf of a Pilbara iron ore customer. End-of-life truck beds are collected directly from site and transported to a metal recycling facility in Port Hedland. The logistics are optimised by utilising the same freight routes used to deliver new truck beds, reducing additional handling and transport requirements.

At the recycling facility, truck beds are dismantled and processed into scrap steel. The recovered material is exported to Japan, where it is reused as feedstock for new steel products, supporting circular economy outcomes.

Since the program commenced, more than 1,125 tonnes of steel have been recycled in partnership with this customer. By managing the decommissioning and recycling process, Schlamm reduces mine site waste, simplifies scrap handling for operators, and contributes to more sustainable end-of-life asset management.



GLOBAL LEADERSHIP. EXTENSIVE NETWORK.

Schlam is the world's largest custom truck bed producer, with global manufacturing hubs conveniently serving major hard rock mining centres.

Our global logistics expertise and network ensures fast, efficient delivery of products, parts, and support services wherever you operate.



KEY CUSTOMER PARTNERSHIPS

RioTinto

Newmont

BHP

BARRICK

Peabody
ENERGY

THIESS

GLENCORE

ANGLOGOLD ASHANT

ALCOA

ENDEAVOUR
MINING

SOUTH32

Barrminco

Fortescue

HANCOCK
IRON ORE

F3M

CAT

HITACHI

KOMATSU

LIEBHERR

OUR COMMITMENT

AT SCHLAM WE ARE ACCOUNTABLE TO
EVERYONE WHO RELIES ON US



Ensuring our customer experience is exceptional.



Building better careers through technology.



Championing integrity and ethics with our suppliers.



Investing in our team members.



Supporting the communities in which we live and work.



Taking global climate responsibility.



Generating long-term value for shareholders.



ABOUT SCHLAM

Headquartered in Perth, Western Australia and Tucson, Arizona, two of the world's most extensive and intensive hard rock mining regions, Schlam is a mining services business with a very specific focus – load and haul equipment.

We produce the world's best mining truck beds and mining buckets for all hard rock mining environments, we support them with the very best product lifecycle care service in the industry.

The result is an unmatched track record in productivity gains, reducing downtime and minimising maintenance. This is why we are the partner of choice for many of the world's biggest mining companies.

SCHLAM ✨



SPEAK TO OUR PAYLOAD TEAM TODAY

AUSTRALIA PHONE +61 8 6148 5555
ADDRESS 435 DUNDAS ROAD
FORRESTFIELD WA 6058
EMAIL INFO@SCHLAM.COM

AMERICAS PHONE +1 (520) 261 6413
ADDRESS 1 SOUTH CHURCH AVENUE
TUCSON AZ 85701
EMAIL AMERICAS@SCHLAM.COM

EMEA PHONE +61 8 6148 5555
EMAIL INFO@SCHLAM.COM
