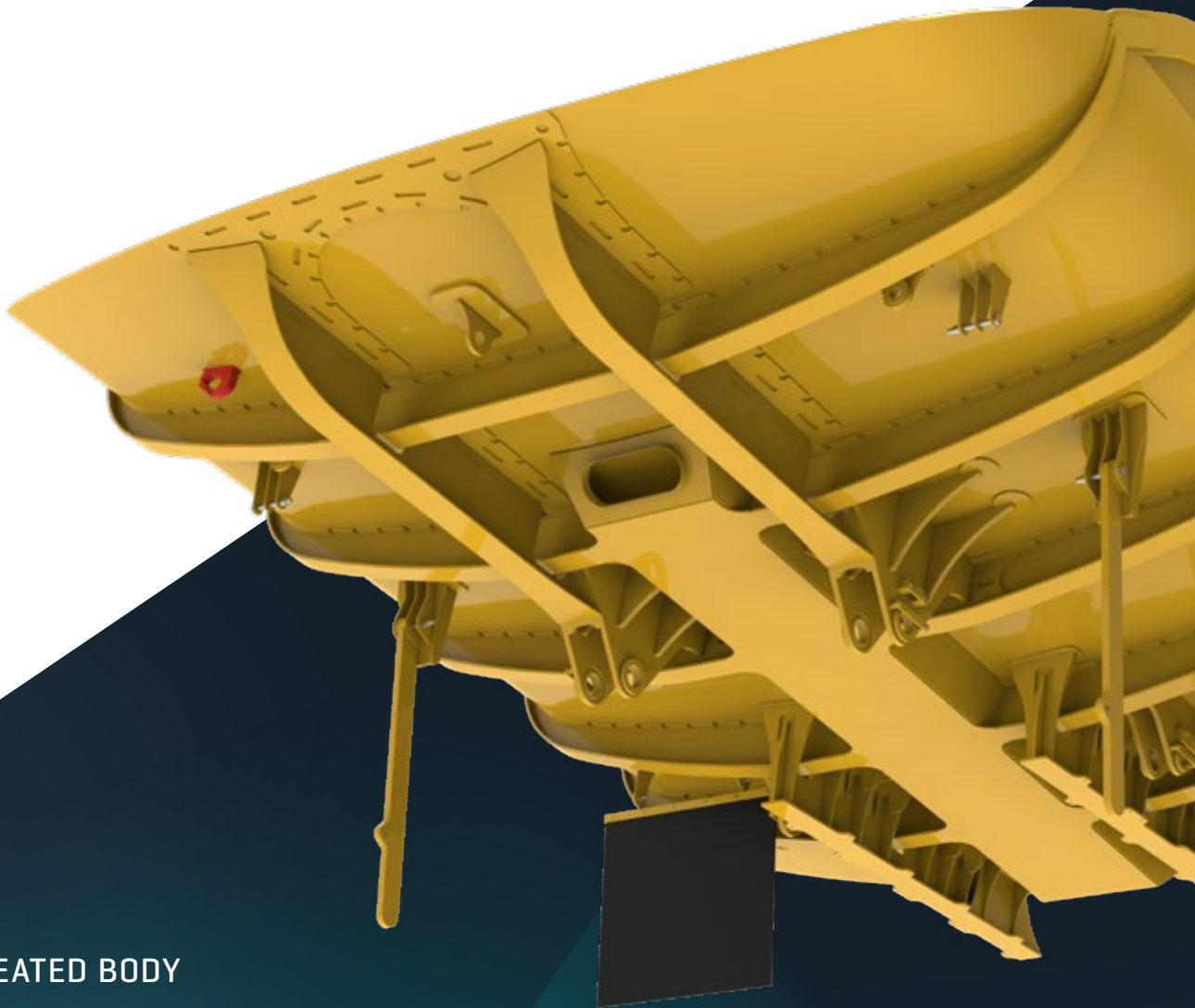


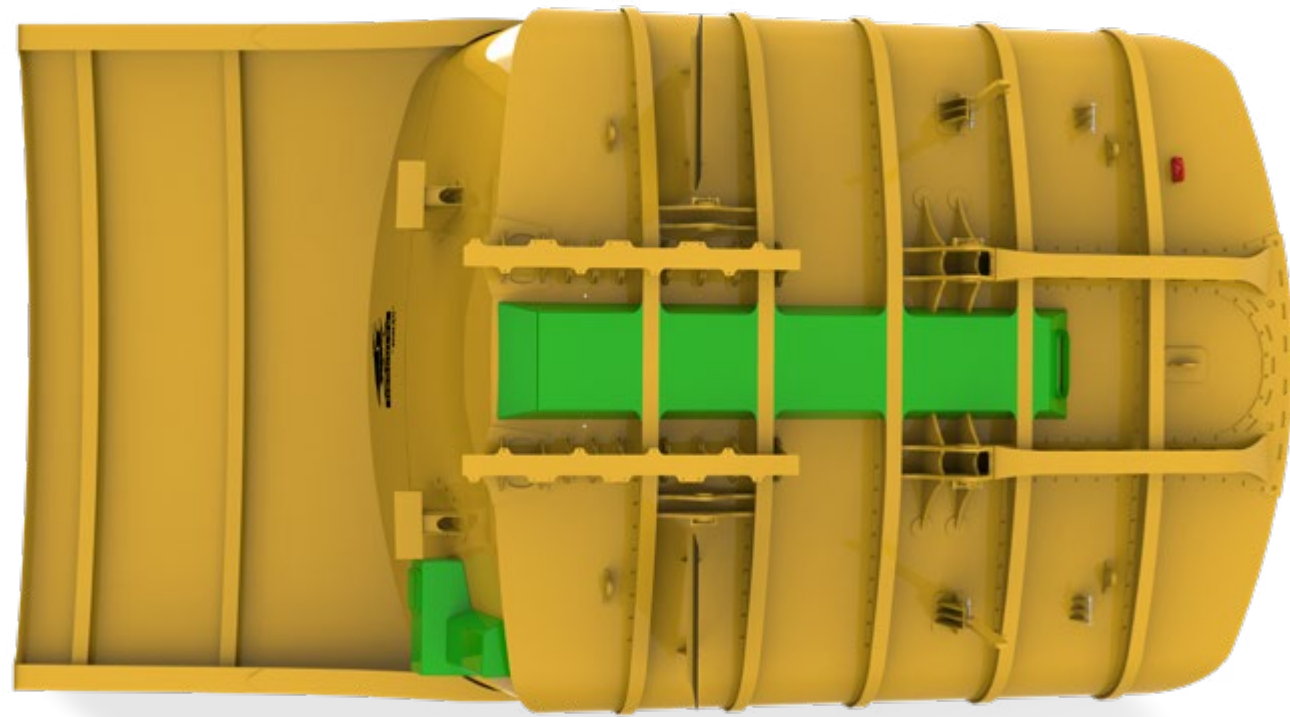
SCHLAM ✦



OPEN-CUT HEATED BODY

DON'T GET CAUGHT
OUT IN THE COLD





MORE PAYLOAD NO MATTER THE WEATHER

MINING IS A GLOBAL INDUSTRY

It places people and equipment in all environments, often in some of the most remote places, where conditions push the envelope for sustained human activity or survival.

The extreme cold presents unique risks to dump truck operators with ore prone to freezing in the dump body - referred to as frozen load. When the body is raised, a frozen

load can cause the truck to tip and even roll over, potentially damaging equipment and even loss of life.

While OEMs offer heated bodies to combat this problem, the trade-off is that they're excessively heavy, resulting in a smaller payload potential.

YOU DON'T HAVE TO CHOOSE BETWEEN SAFETY AND PAYLOAD

The original DT HiLoad Hercules' innovative curved dump body design is revolutionising the payload capacity of all classes of haul trucks, even in the coldest of condition.

The Hercules heated body channels exhaust gases through the tray's underside, specifically targeting areas prone to freezing in extreme conditions. The design is based on rigorous flow modelling using Schlam's state of the art computational fluid

dynamics software combined with thousands of field-testing hours in Kazakhstan.

Not only is the Schlam Hercules Heated Body proven to distribute heat more evenly than a comparable OEM design, but it also carries 20 more tonnes due to its lightweight design.

HERCULES HEATED BODY BENEFITS

- LOWERS RISK OF FROZEN LOAD
- INNOVATIVE DESIGN TARGETS AREAS PRONE TO FREEZING ON THE DUMP BODY
- INCREASES PAYLOAD BY UP TO 10%
- HIGHER FLEET PRODUCTIVITY
- LOWERS CAPITAL EXPENDITURE ON FLEET
- REDUCES DOWNTIME AND MAINTENANCE COSTS
- LOWER FUEL USAGE PER TONNE AND LESS EMISSIONS
- EXCEPTIONAL STRENGTH WITHOUT ADDING EXTRA WEIGHT
- IMPROVED DUMPING QUALITIES REDUCING DELIVERY TIME AND DOZER CLEAN UP
- OUTSTANDING LOAD RETENTION LESSENING ROCK SPILLAGE AND GRADER CLEAN UP

HERCULES HEATED BODY FEATURES

- LIGHTWEIGHT BODY
- HEAVY-DUTY AND DURABLE WITH REDUCED WEAR
- CUSTOM DESIGNED
- UNIQUE WEAR MANAGEMENT PROGRAM
- MODULAR DESIGN
- MULTIPLE MATERIAL OPTIONS INCLUDING HARDOX 500 TUF, BISALLOY 500 AND Q&T 450

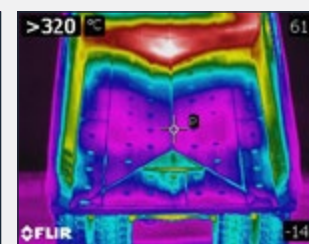
CARRYING SURFACE

SCHLAM HERCULES HEATED BODY



76.6°C
-14.7°C

OEM HEATED BODY



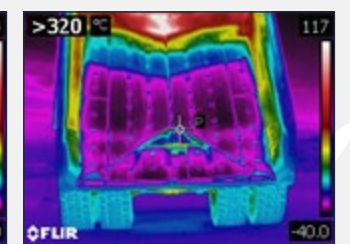
61.7°C
-14.9°C

SCHLAM HERCULES HEATED BODY



124°C
-40.0°C

OEM HEATED BODY



117°C
-40.0°C

The lowest temperature value on the right of the image remains constant while the upper value changes.

The Schlam Hercules Heated Body displays greater heat transfer and thermal distribution across the carrying surface than the OEM body.



SPEAK TO OUR PAYLOAD TEAM TODAY

AUSTRALIA [08] 6148 5555
INTERNATIONAL +61 8 6148 5555
EMAIL PAYLOAD@SCHLAM.COM

schlam.com

ABOUT SCHLAM

What we do at Schlam is make mining equipment more productive. How we do it is by solving the payload and maintenance challenges that keep mines from being better tomorrow than they were today. We started in 1996 as a problem-solving engineering business. Today, we provide payload solutions to mines on six continents and our maintenance people are high achievers in every discipline.

Head Office

435 B&C Dundas Road
Forrestfield 6058
Western Australia